



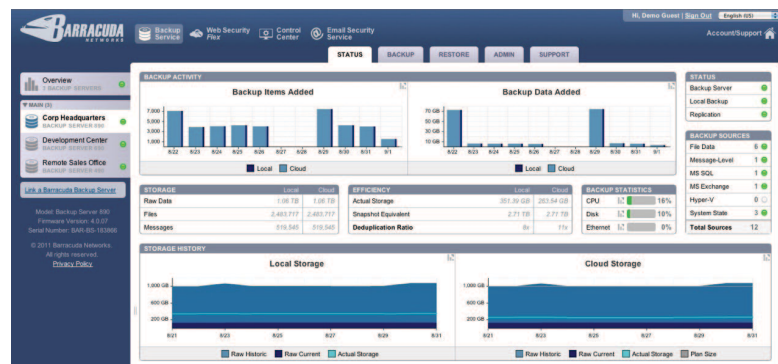
Barracuda Backup Service

Provides local disk-based data backup and deduplication

The Barracuda Backup Service is a complete and affordable data backup solution. The Barracuda Backup Server provides a full local data backup and then replicates data offsite for disaster protection. This hybrid approach provides the best of both worlds - local backups via a dedicated appliance for great performance and restore times, and disaster recovery data protection through offsite replication using either the Barracuda Cloud Storage Service or site-to-site "private cloud" replication. Data deduplication is applied inline at a block level to reduce traditional backup storage requirements 20 to 50 times while also reducing backup windows and bandwidth requirements.

Powerful, Complete Solution

Designed for organizations of various sizes and needs, the Barracuda Backup Server maintains a local copy of data and efficiently transfers data offsite without placing additional burden on production servers. The Barracuda Cloud Storage Service is monitored and managed by Barracuda Central, providing reliable and secure offsite disaster recovery storage for business critical data. Barracuda Networks support technicians are available 24x7 for emergency assistance with restores in the event of a system failure or a disaster.



The Barracuda Backup Service Web Interface provides access and displays backup data usage and allows quick restoration of files.

Included with the Barracuda Backup Service at no additional cost, the Barracuda Backup Agent software for Windows provides complete native backup of Microsoft Exchange Server, Microsoft SQL Server, Windows system state, Windows file system data, and Microsoft Hyper-V hosts. In addition to the agent backup, the Barracuda Backup Server can back up data directly from network file shares using industry standard protocols. For granular and convenient restoration of email messages and mailboxes, the message-level backup feature connects directly to Microsoft Exchange and Novell GroupWise.

Easy-to-Use and Maintain

The Barracuda Backup Service web user interface makes it easy to manage backups and conduct data restores across multiple Barracuda Backup Servers at one or more locations. The web user interface provides access and control of settings, reports, restores, statistics, and account information, and the ability to manage multiple Barracuda Backup Servers and cloud storage service plans from a single interface. In addition, customers receive automated alert notifications upon detection of conditions affecting backups.

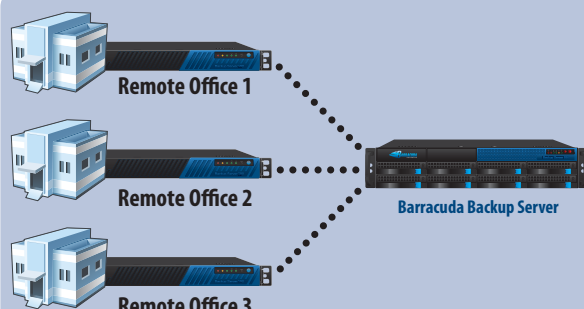
Cloud Storage Replication



Private Cloud Replication



Multi-Site Replication



BARRACUDA BACKUP SERVICE

MODEL
190
390
490
690
890
990
1090



BARRACUDA BACKUP SERVICE

MODEL
190
390
490
690
890
990
1090

TECHNICAL SPECIFICATIONS

Key Features

DATA BACKUP FEATURES

- Full local backup and restore
- Data deduplication
- Cloud replication with mirrored storage
- Site-to-site replication
- 256-bit AES encryption to/at offsite locations
- Offsite selection
- Major OS compatibility
 - Windows (Backup Agent / CIFS / SMB)
 - Linux (SSHFS)
 - Mac OS X (SSHFS)
 - Novell (CIFS / SSHFS)
- Message-level email backup
 - Microsoft Exchange
 - Novell Groupwise
- Open file backup support
- Centralized management
- File change detection
- Continuous data protection
- Automated backup scheduling
- Data transfer rate limits
- VMware backup

BACKUP SOFTWARE INCLUDED

- Barracuda Backup Agent for:
 - Microsoft Windows File System
 - Microsoft Exchange
 - Microsoft SQL Server
 - Microsoft Windows system state including Windows registry, Active Directory, etc.
 - Hyper-V for Windows Server 2008
- Barracuda Restore Client for Windows

REPORTING AND STATISTICS

- Server health monitoring
- Network traffic utilization
- Storage utilization
- File revision history
- Detailed offsite backup reports
- Detailed restoration reports
- Administrator / user activity

ADMINISTRATION & POLICY MANAGEMENT

- Centralized web user interface
- User-based administration
- Flexible data retention
- Backup exclusion rules
- Litigation readiness
- File watch rules

DATA RESTORATION METHODS

- Bare metal recovery for Windows Server 2008, SBS 2011
- File / Application restore from web user interface
- File download from web user interface
- Barracuda Restore Client for Windows
- FTP from Barracuda Backup Server (file share method)
- FTPS from Barracuda Networks cloud storage (file share method)
- 24x7 Barracuda Technical Support restoration assistance

Hardware Features

POWER REQUIREMENTS

- AC input voltage 100-240 volts
- Frequency 50/60 Hz

CONNECTORS

- Standard VGA
- PS/2 keyboard / mouse
- Ethernet (see chart below)
- Serial port (DB-9)

Support Options

BARRACUDA ENERGIZE UPDATES

- Cloud-based web user interface
- Proactive monitoring
- Alert notifications on errors, warnings, file-based events
- Standard technical support

INSTANT REPLACEMENT SERVICE

- Replacement unit shipped next business day
- 24x7 technical support
- Shipment of restored data from Barracuda Networks cloud

CLOUD STORAGE SERVICE

The Barracuda Backup Service can be deployed with Barracuda Cloud Storage Service to meet offsite backup and disaster recovery needs. Market-leading scalable and affordable cloud storage is allocated in 200 GB increments at a monthly rate of \$0.25/GB. A typical 20-50X storage savings over traditional backup methods is realized through advanced data deduplication and compression. A total storage footprint of approximately 1.5X a single full backup is sufficient to satisfy most retention needs.

MODEL COMPARISON	MODEL 190	MODEL 390	MODEL 490	MODEL 690	MODEL 890	MODEL 990	MODEL 1090
Capacity*							
Suggested Backup Volume	200 GB	500 GB	1 TB	3 TB	6 TB	12 TB	40 TB
Internal Capacity	500 GB	1 TB	2 TB	6 TB	12 TB	24 TB	80 TB
HARDWARE							
Rackmount Chassis	1U Mini	1U Mini	1U	1U	2U	3U	4U
Dimensions (in)	16.8 x 1.7 x 9	16.8 x 1.7 x 14	17.2 x 1.7 x 19.8	17.2 x 1.7 x 19.8	17.4 x 3.5 x 25.5	17.2 x 5.2 x 25.5	17.2 x 7 x 27.4
Dimensions (cm)	42.7 x 4.3 x 23	42.7 x 4.3 x 35.6	43.7 x 4.3 x 50.3	43.7 x 4.3 x 50.3	44.2 x 8.9 x 64.8	43.7 x 13.2 x 64.8	43.7 x 17.8 x 69.9
Weight (lbs/kg)	8 / 3.6	12 / 5.4	26 / 11.8	26 / 11.8	52 / 23.6	76 / 34.5	154 / 70
Ethernet	1 x Gigabit	1 x Gigabit	1 x Gigabit	1 x Gigabit	1 x Gigabit	1 x Gigabit	1 x Gigabit, 1 x 10GB Copper ¹
AC Input Current (Amps)	1.0	1.2	4.1	4.1	5.1	5.5	10.5
Redundant Disk Array (RAID)		✓	✓	✓	✓	✓	✓
Redundant Power Supply					Hot Swap	Hot Swap	Hot Swap
FEATURES							
Hardened and Secure OS	✓	✓	✓	✓	✓	✓	✓
Local Backup Cache	✓	✓	✓	✓	✓	✓	✓
Backup Schedules	✓	✓	✓	✓	✓	✓	✓
Bandwidth Rate Control	✓	✓	✓	✓	✓	✓	✓
Secure Offsite Transfer	✓	✓	✓	✓	✓	✓	✓
Local Restore	✓	✓	✓	✓	✓	✓	✓
Partial Offsite Selection	✓	✓	✓	✓	✓	✓	✓

US 18.3 Specifications subject to change without notice. *Suggested backup volume is raw, uncompressed data to be backed up. This sizing guideline depends on environment and selected options.
¹Fiber available upon request. All active Barracuda Backup Server models require an associated cloud storage service or Energize Updates subscription.

Copyright © 2012 Barracuda Networks Inc. • 3175 S. Winchester Blvd., Campbell, CA 95008 • 1-888-ANTI-SPAM (1-888-268-4772) • www.barracuda.com